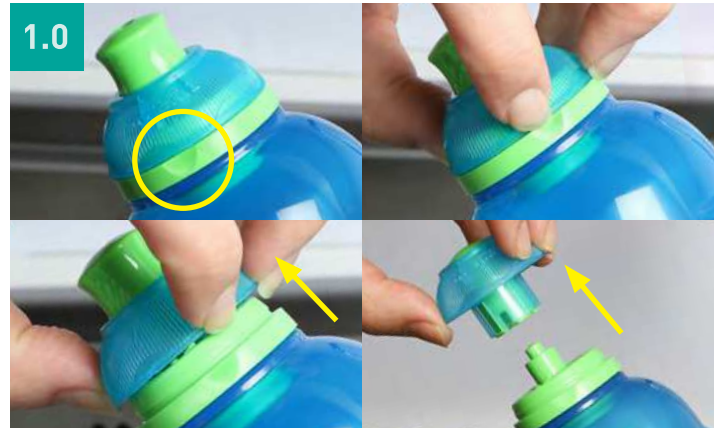
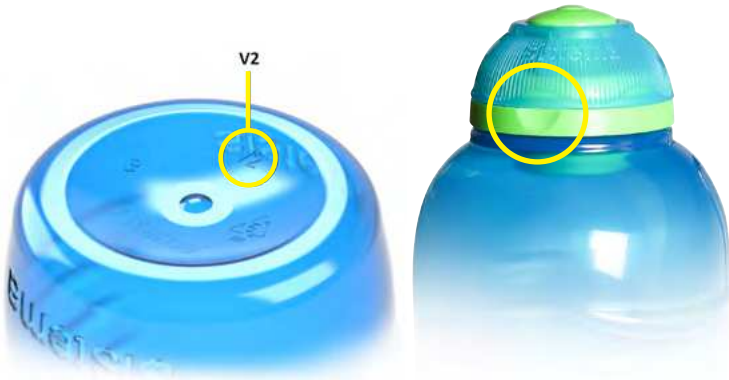


TWIST 'N' SIP™ Cleaning Instructions

sistema®

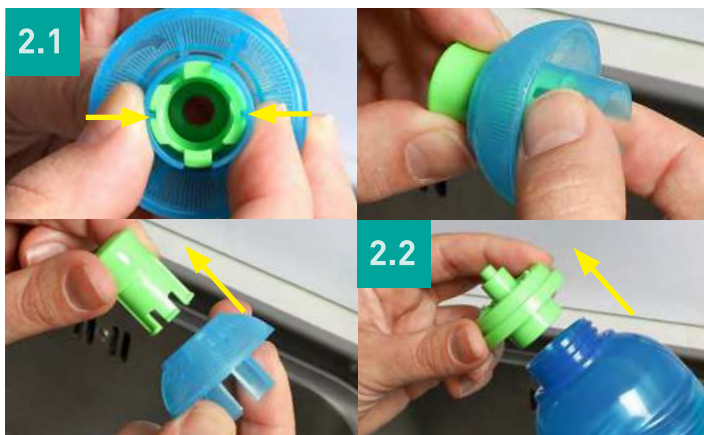
330ml, 460ml and 620ml TWIST 'N' SIP™ Bottle - VERSION 2

VERSION 1 OR VERSION 2? To tell the difference between the bottles, version 2 has 'V2' engraved on the base of the bottle and a thumb groove on the lid.



1.0 With nozzle open locate groove on lid base, and using this groove place fingernails under the lid cover. Pull to remove lid cover and nozzle from lid base/bottle.

NB; If having difficulty removing lid cover try soaking the lid in warm water for a few minutes first.

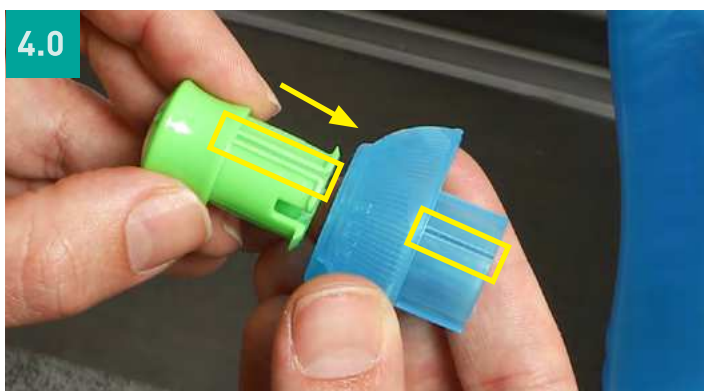


2.1 The bottle nozzle is held in place by two clips; push in the sides of the inner lid cover while pulling the nozzle to remove from the lid cover. **2.2** Unscrew the lid base and remove from bottle.



3.1 Wash all bottle and lid components in the dishwasher (top rack only). or...

3.2 Hand wash all bottle and lid components with hot soapy water.



4.0 Ensure all components of bottle and lid are completely dry before reassembling. When reinserting nozzle into lid cover ensure rail and guide markers line up as shown.



5.0 While holding down the nozzle (ensuring the nozzle and lid cover are held together tightly), **TWIST** the lid cover onto the lid base clockwise. Press down to click the lid cover into place. Check cap function by twisting the cap cover anti-clockwise to open the nozzle. Enjoy!

Please visit the Sistema website for more information and [cleaning videos](#).

www.sistemaplastics.com

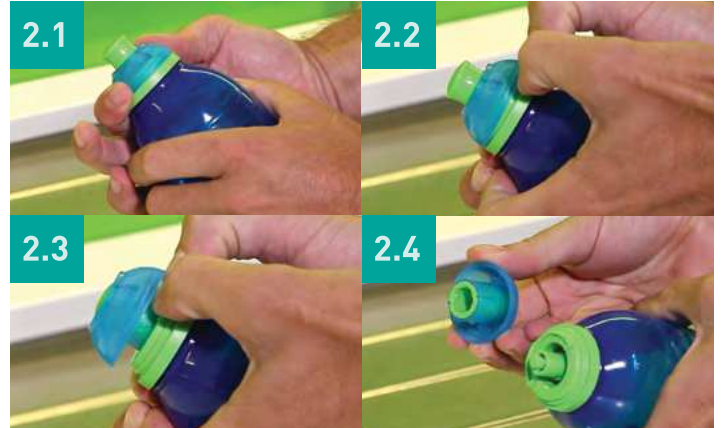
Phthalate & BPA free  Made in New Zealand

330ml, 460ml and 620ml TWIST 'N' SIP™ Bottle - VERSION 1



1.0 Place cap in boiling water for 30 seconds and remove cap safely after time is up. Put cap back on bottle.

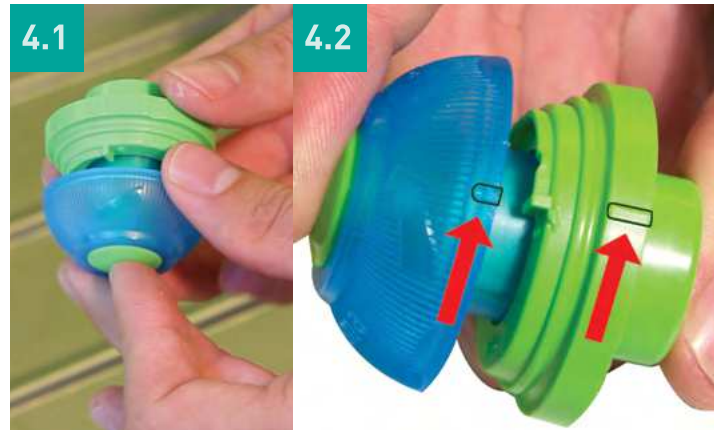
⚠ Caution: Be careful when using boiling water.



2.1 Whilst still hot, twist cap so that nozzle is open. Using thumbs, apply pressure between lid cover and lid base to release lid cover.



3.0 Wash the components in the dishwasher (top rack only), or hand wash in hot soapy water.



4.1 To reassemble, place lid cover onto lid base and align indicator tabs.



5.1 While holding down the nozzle, twist the lid base onto the lid cover. Then firmly press the lid cover and lid base together until it snaps shut.



6.0 Place cap back on bottle and check cap function. Enjoy!